



2022 Product range

Version September 2022

YOUR SMART LAUNDRY PARTNER

IPSO WORKS HARD, YOU WORK SMART

The right solution for your needs

IPSO makes it easy for you to reliably get high volumes of high quality laundry for the lowest cost. Our complete range of laundry solutions is designed to maximize your resources and deliver long-term high performance.

IPSO equipment is developed in the world's most sophisticated commercial laundry laboratory. Manufactured with high quality components, our machines thrive in the most demanding environment. IPSO solutions are proven through rigorous testing under real world conditions.

Partner with the world leader in commercial laundry

Your experienced, knowledgeable IPSO team works as hard as you do to help you achieve your goals. We are here for you with advice, parts, service and expertise when you need it.

With IPSO you enjoy all the support of Alliance Laundry Systems. Dedicated solely to laundry, Alliance leads the world in sales, product range, support network and R&D investment.

HOW IPSO DELIVERS SUPERIOR VALUE

Superb results – People want perfect laundry. You'll exceed their expectations with IPSO. Our solutions are designed by hygiene scientists and laundry engineers to perfectly process mountains of laundry quickly and efficiently.

Lower cost – Laundry output is measured in cost per kilogram. Average the equipment price, maintenance costs, labor costs and consumable costs over the life of the machine and IPSO is by far the smartest choice.

Bigger range – Because IPSO offers the biggest range of equipment, you can choose exactly the right unit for your need. That means you don't pay for unused capacity or experience bottlenecks.

Exceptional reliability – To achieve great laundry results your equipment must be powerful enough to wash thoroughly, yet gentle so fabrics last longer. Laundry equipment must deliver an optimum performance under tough conditions for years on end. Check out our reputation and you'll discover IPSO equipment is renowned for reliability.

Friendly operation – Our R&D teams reproduce real laundry conditions to test the usability of our systems. Bigger door openings, easy-to-read feedback and intuitive controls all contribute to the productivity and satisfaction of the people who operate the machines.

Fast service – We'll help you with a regular maintenance plan to keep your laundry in tip-top shape. Our unrivalled partner network and presence in over 100 countries offers professional service and technical support maintenance and spare parts supply.

Industry-leading 3+2 warranty – Our confidence in the dependability and robustness of our equipment is reflected in our three-year warranty policy. Plus a two-year warranty extension on critical parts.



As an IPSO customer, our local experts bring you a wide range of laundry support services, including pre-sales consulting, in-house laundry design services, after-sales follow-up and financing solutions.

SMART INNOVATIONS FOR SUPERIOR LAUNDRY

State-of-the-art IPSO technology is tested and proven to raise laundry efficiency and save water, energy and detergent. Our innovations ensure linen lasts longer and make it easier for your laundry team to do a great job.



Optimised energy consumption while washing

The absorption ability of the load is automatically determined at the start of the cycle. Water levels are then optimized throughout the wash cycle with no compromise to the quality of the clean.



Ironing speed adjustment based on temperature control

chooses the right ironing speed based on temperature control in order to have the best ironing results



Optimised energy consumption while drying

Save a pile of money each year by eliminating over-drying and maximizing dryer throughput.



Special shaped drum

The special shape of the drum holes provides extra mechanical action which leads to better washing results. The linen doesn't stick to the drum, which simplifies unloading



Easy control

This user-friendly control allows the operator to see at a glance the temperature, stage and remaining wash cycle time.



Programmable control

Large display panel allowing every step of the washing cycle to be easily modified.



Management software

Comprehensive laundry management software allows the user to remotely monitor and control every aspect of a laundry operation.



Touch screen control for Vend

Control with 7" touch screen featuring an intuitive user interface for users & access to performance data through cloud for owners.



Touch screen control for OPL

Control with 7" touch screen featuring new connectivity and data-accessibility functionalities through cloud.



Integrated management platform

allowing analysis of financial & operational performance as well as service and maintenance organization.

BUY RIGHT WITH IPSO

How to choose the right laundry solutions

We designed this catalog to make it easy for you to identify the right equipment for your needs. Your IPSO partner is happy to guide you through the options, answer questions and help you get the best value for money.

Laundry solutions designed for your sector

A laundromat has totally different needs to a hospital. Restaurants, hotels, facility managers and care homes have different laundry needs too.

Your IPSO official partner provides you with professional analysis of your specific laundry needs prior to purchase.

Laundromats

Build a brand new laundromat or upgrade an existing laundromat. We'll help you with everything from location, to construction, financing and ongoing support.

Professional

For outsourced laundry operations and dry-cleaners.

Community

Laundry solutions for residential blocks and other shared living spaces

Hospitality

In-house laundry for hotels and guesthouses including coin/card-operated for guests

Catering

Food service industry laundry solutions, from restaurants to processing plants

Healthcare

Specialty solutions for hospitals, clinics and research environments

Facility management

Solution for cleaning companies for cloths, mops and other cleaning textile.

Institution

Laundry for dormitories, barracks, prisons and other living spaces

Marine

Shipboard solutions for laundry on the high seas



Self-service laundry in Madrid, Spain

IPSO CONNECT

DIGITAL LAUNDROMAT SOLUTION

Intuitive, real-time laundromat data that's custom-made for the way you operate.

Our Digital Monitoring Solution gives you the reporting, monitoring and configuration capabilities you need to do what you do best: **make intelligent business decisions.**

Our intuitive interface and easy-to-use tools, including a dashboard to see all the aspects of your business and an app for your customers; gives you maximum oversight of your business which leads to maximum efficiency, and of course, maximum profit.

IPSO Connect gives you the reporting, monitoring and configuration capabilities you need to do what you do best: **make intelligent business decisions.**



REAL-TIME PERFORMANCE DATA



REMOTE START & SYSTEM MONITORING



TURNS PER DAY



REBOOT MACHINES FROM THE DASHBOARD



MOBILE APP FOR YOUR CUSTOMERS



SEND NOTIFICATIONS THROUGH THE APP



OUR MISSION:
A LAUNDROMAT THAT'S AS SMART AS YOU ARE

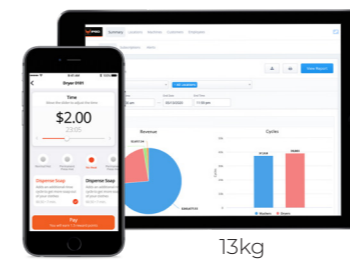


IPSO CONNECT DASHBOARD TO MONITOR YOUR BUSINESS

- Interactive dashboards can be configured to show revenue, turns and a host of other values.
- Exportable Excel stats of the machines usage and performance for further analysis.
- Customizable date range to allow view by day, week, month, etc.
- Reset washing and drying machines if they are blocked.
- Manage the lights, fences and more, if they have been connected to the domotic device.

IPSO CONNECT FOR YOUR CUSTOMERS

- Pay by card using the IPSO Connect application.
- Show the available washers and dryers and choose the program.
- Offer free washing and drying to your customers.
- Send notifications about promotions and events.
- Receive suggestions and comments about the experience of your customers in your laundromat.



13kg WASHER-EXTRACTOR: RESTART MACHINE

18kg WASHER-EXTRACTOR: FREE WASHING CYCLE

PEAK CUSTOMER USAGE: FRIDAY

COMPATIBLE WITH:
• IY Washers and all dryers
• Most central payment systems

For more information, please visit: www.ipso.com



SOFT MOUNTED WASHER-EXTRACTORS

TUMBLE DRYER

LAUNDRY PEACE-OF-MIND FROM THE WORLD LEADER

Choosing IPSO gives you access to the resources of Alliance Laundry Systems for all your laundry solutions needs in the days, months and years ahead.

Alliance Laundry Systems makes the world cleaner as the premier provider of laundry solutions. We deliver leading performance in commercial laundry through our family of brands, including IPSO. Laundry is our sole business.

Alliance leads the world in commercial laundry sales, product range, global reach and R&D investment. We serve more than 140 countries with a team of more than 3,000. Check out the advantages you enjoy with us:



Superior technology

The world needs faster, easier, better laundry. In recent years, we've invested over USD300 million in R&D to make it happen. Our global team of laundry scientists, engineers and designers are dedicated to purpose-driven laundry innovation.

Comprehensive training

Alliance Laundry Systems University (ALSU) offers training for everyone involved in the laundry process. Our laundry learning programs include operator training, service schools, maintenance seminars, business training and much more.

Business and financial services

We aim to make laundry as cost-effective and rewarding as possible. In some regions we support our customers with comprehensive financial services. In the past 20 years, we have helped laundry entrepreneurs grow with over USD2 billion in loans.

Award-winning customer support

Our outstanding customer service is dedicated to helping you develop the most efficient laundry operation possible— and keeping it running at peak efficiency. Order Alliance Genuine Parts today and experience our exceptional service for yourself.

Stronger network

You're never too far from better laundry, thanks to expert Alliance teams in 14 strategic locations worldwide and over 1,200 specialist commercial laundry distributors. No matter where in the world you are, big help with big laundry is always within reach.

Measurably better

To get the excellence you deserve, you can rate our services at every interaction. If you're not happy, let us know and we'll make it better. Were we helpful? Share your approval. Our team thrives on delivering a positive experience. Understanding your satisfaction helps us improve our performance.

Learn more at www.alliancelaundry.com

PRODUCT RANGE OVERVIEW

This brochure reflects the complete offering of IPSO-products & -technologies. Due to local strategies, certain markets can be excluded from access to certain products & technologies mentioned in this brochure. Contact your local IPSO Partner for more information.

SEMI-COMMERCIAL EQUIPMENT*



HARDMOUNT WASHERS



SOFTMOUNT WASHERS

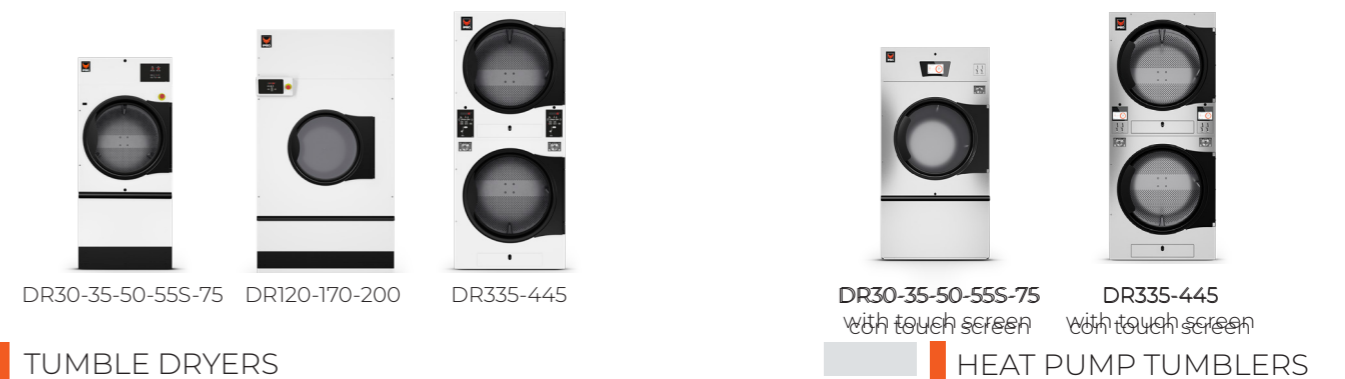


BARRIER WASHERS

version with Touch control only available in Europe



TUMBLE DRYERS

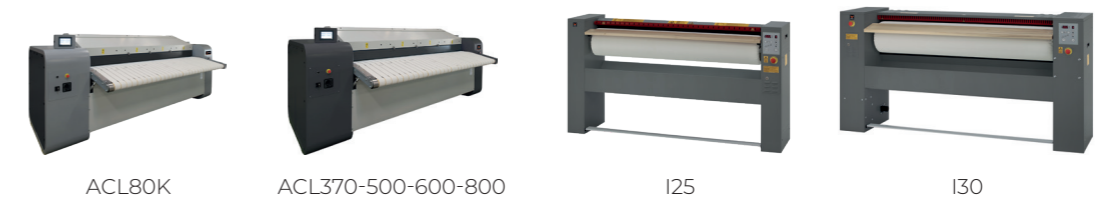


TUMBLE DRYERS

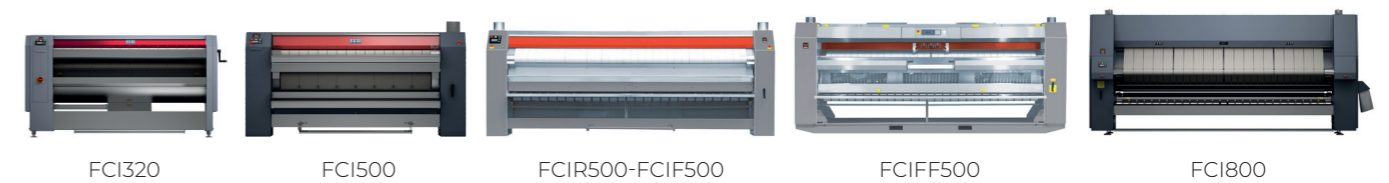


HEAT PUMP TUMBLERS

CHEST HEATED IRONERS



CYLINDER HEATED IRONERS



* only available in APAC ** only available in EMEA

SOFTMOUNT WASHER-EXTRACTORS

IY65 | IY80 | IY105 | IY135 | IY180 | IY240 | IY280

Soft mounted washer-extractors are built to extend linen life, reduce water usage and utility costs, and maximize productivity. The heavy-duty construction provides dependable operation and assures your equipment will be in service for years to come.

IDEAL FOR

- Hotels
- Restaurants
- Hospitals
- Nursing Homes
- Laundromats
- Industrial laundries
- Cleaning companies
- Spa & Wellness
- Sport clubs
- Campings
- Public sector institutions
- Apartment buildings
- Universities
- Marine
- Wet-cleaning

SMART TECHNOLOGY



Optimised energy consumption



Easy control



Programmable control



Touch screen control for Vend



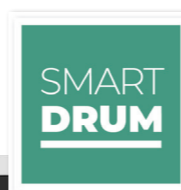
Touch screen control for OPL



Integrated management platform

COMPLETE WITH

- Stainless steel top and front panel, black side panels
- Stainless steel drum and tub
- Aries easy-to-use microprocessor
- Patented soap hopper
- Large drain valve (Ø76 mm)
- Easy access to all vital parts from the front
- Large door opening for easy loading and unloading
- High capacity water inlets (IY280)



In this picture IY65-280

OPTIONAL ENHANCEMENTS

- Aries Elite: fully programmable control
- Evolis touch screen control
- Coin-operation
- Stainless steel side panels
- USB plug (on the back panel)
- Liquid soap connection
- Liquid soap pump
- Water recovery kit
- Steam heating version
- Drain pump (IY65, IY80)
- 3rd water inlet
- High capacity water inlets (IY180, IY240)

	IY65	IY80	IY105	IY135
INNERDRUM				
CAPACITY 1:10	6,5 kg	7,5 kg	10,5 kg	13,5 kg
CAPACITY 1:9	7 kg	8,5 kg	12 kg	15 kg
VOLUME	65 L	75 L	105 L	135 L
DIAMETER	530 mm	530 mm	620 mm	620 mm
DRUM SPEED				
WASH	49 rpm	49 rpm	49 rpm	49 rpm
EXTRACTION	1165 rpm	1165 rpm	1075 rpm	1075 rpm
G-FACTOR	400	400	400	400
HEATING				
ELECTRICITY	6 KW	6 KW	9 KW	12 KW
STEAM	1-8 bar	1-8 bar	1-8 bar	1-8 bar
HOT WATER	90° C	90° C	90° C	90° C
SOUND PRESSURE LEVEL DB	< 65 dB (A)	< 65 dB (A)	< 65 dB (A)	< 65 dB (A)
WATER VALVE CONNECTION	3/4" BSP	3/4" BSP	3/4" BSP	3/4" BSP
WATER PRESSURE	100-800 kPa	100-800 kPa	100-800 kPa	100-800 kPa
REC. WATER PRESSURE	300-500 kPa	300-500 kPa	300-500 kPa	300-500 kPa
WATER INLET	20 L/min	20 L/min	20 L/min	20 L/min
DRAIN VALVE OUTER	Ø 76 mm	Ø 76 mm	Ø 76 mm	Ø 76 mm
FLOW AMOUNT WITH DRAIN VALVE	210 L/min	210 L/min	210 L/min	210 L/min
STEAM VALVE CONNECTION	1/2" BSP	1/2" BSP	1/2" BSP	1/2" BSP
STEAM PRESSURE	100-800 kPa	100-800 kPa	100-800 kPa	100-800 kPa
TRANSPORT DATA				
NET WEIGHT	170 kg	185 kg	210 kg	255 kg
MACHINE DIMENSIONS H X W X D	1135 x 710 x 740 mm	1135 x 790 x 710 mm	1245 x 795 x 795 mm	1245 x 795 x 945 mm
PACKING DIMENSIONS H X W X D	1265 x 750 x 840 mm	1365 x 835 x 840 mm	1365 x 835 x 840 mm	1365 x 835 x 985 mm

	IY180	IY240	IY280
INNERDRUM			
CAPACITY 1:10	18 kg	24 kg	28 kg
CAPACITY 1:9	20 kg	27 kg	31 kg
VOLUME	180 L	240 L	280 L
DIAMETER	750 mm	750 mm	750 mm
DRUM SPEED			
WASH	42 rpm	42 rpm	42 rpm
EXTRACTION	980 rpm	980 rpm	915 rpm
G-FACTOR	400	400	350
HEATING			
ELECTRICITY	12 KW	18 KW	22 KW
STEAM	1-8 bar	1-8 bar	1-8 bar
HOT WATER	90° C	90° C	90° C
SOUND PRESSURE LEVEL	< 65 dB (A)	< 65 dB (A)	< 65 dB (A)
WATER VALVE CONNECTION	3/4" BSP	3/4" BSP	3/4" BSP
WATER PRESSURE	100-800 kPa	100-800 kPa	100-800 kPa
REC. WATER PRESSURE	300-500 kPa	300-500 kPa	300-500 kPa
WATER INLET	20 L/min	20 L/min	20 L/min
DRAIN VALVE OUTER	Ø 76 mm	Ø 76 mm	Ø 76 mm
FLOW AMOUNT WITH DRAIN VALVE	210 L/min	210 L/min	210 L/min
STEAM VALVE CONNECTION	1/2" BSP	1/2" BSP	1/2" BSP
STEAM PRESSURE	100-800 kPa	100-800 kPa	100-800 kPa
TRANSPORT DATA			
NET WEIGHT	380 kg	430 kg	495 kg
MACHINE DIMENSIONS H X W X D	1430 x 970 x 970 mm	1430 x 970 x 1105 mm	1430 x 970 x 1185 mm
PACKING DIMENSIONS H X W X D	1570 x 1025 x 1015 mm	1570 x 1025 x 1150 mm	1570 x 1025 x 1225 mm

SOFTMOUNT WASHER-EXTRACTORS

IY350 | IY450 | IY600 | IY800 | IY1000 | IY1200

Soft mounted washer-extractors are built to extend linen life, reduce water usage and utility costs, and maximize productivity. The heavy-duty construction provides dependable operation and assures your equipment will be in service for years to come.

IDEAL FOR

- Hotels
- Hospitals
- Nursing Homes
- Industrial laundries
- Cleaning companies
- Public sector institutions
- Marine

SMART TECHNOLOGY



Optimised energy consumption



Programmable control



Touch screen control for OPL



Integrated management platform

COMPLETE WITH

- Stainless steel cabinet
- Stainless steel drum and tub
- Aries Elite - fully programmable microprocessor
- 2 large drain valves
- Frequency controlled motor
- Large door opening for easy loading and unloading
- Perforated lifting ribs
- Soap hopper with 5 removable compartments
- Eco washing programs: reduces water and electricity consumption



In this picture IY350-450-600

OPTIONAL ENHANCEMENTS

- Liquid soap pumps
- Aries Assist
- EVOLIS ELITE touch screen control
- Forward tilting (IY450-600-800-1000-1200L)
- Automatic weighing system through 4 weighing cells

	IY350	IY450	IY600
INNERDRUM CAPACITY 1:10	35 kg	45 kg	60 kg
CAPACITY 1:9	39 kg	50 kg	67 kg
VOLUME	350 L	450 L	600 L
DIAMETER	914 mm	914 mm	1035 mm
DRUM SPEED			
WASH	45 rpm	45 rpm	42 rpm
EXTRACTION	839 rpm	839 rpm	788 rpm
G-FACTOR		360	
PROGRAMMER		standard	
ARIES ELITE			
HEATING			
100% HOT WATER		90° C	
100% ELECTRICAL	24 kW	36 kW	54 kW
STEAM HIGH PRESSURE CONNECTION		3-8 bar	
ELECTRICAL		3 x 200-240/50-60Hz 3 x 380-415/50-60Hz 3 x 440-480/50-60 Hz	
WATER INLET		2 x 25 (1")	
STEAM INLET		19 (3/4")	
DRAIN DIAMETER		2 x 76 mm (3")	
TRANSPORT DATA			
NET WEIGHT	1010 kg	1350 kg	1500 kg
MACHINE DIMENSIONS H X W X D	1925 x 1315 x 1270 mm	1925 x 1315 x 1502 mm	1925 x 1315 x 1502 mm
PACKING DIMENSIONS H X W X D		2125 x 1425 x 1700 mm	

	IY800	IY1000	IY1200
INNERDRUM CAPACITY 1:10	80 kg	100 kg	120 kg
CAPACITY 1:9	89 kg	108 kg	128 kg
VOLUME	807 L	972 L	1154 L
DIAMETER	1110 mm	1200 mm	1300 mm
DRUM SPEED			
WASH	36 rpm	33 rpm	32 rpm
EXTRACTION	750 rpm	720 rpm	695 rpm
G-FACTOR		350	
PROGRAMMER		standard	
ARIES ELITE			
HEATING			
ELECTRICITY	67,5 kW	-	-
STEAM HIGH PRESSURE CONNECTION		3-8 bar	
ELECTRICAL		3 x 200-240/50-60HZ 3 x 380-480/50-60Hz	
WATER INLET		3 x 38 (1 1/2")	
STEAM INLET		25 (1")	
DRAIN DIAMETER		2 x 103 mm (4")	
TRANSPORT DATA			
NET WEIGHT	2640 kg	3170 kg	3480 kg
MACHINE DIMENSIONS H X W X D	1985 x 1495 x 1940 mm	2060 x 1790 x 2005 mm	2085 x 1855 x 2085 mm
PACKING DIMENSIONS H X W X D	2200 x 1690 x 1950 mm	2345 x 1865 x 2125 mm	2340 x 2000 x 2170 mm

HARDMOUNT WASHERS*

[*check regional availability]

IA80 | IA105 | IA135 | IA180 | IA240 | IA280 | IA332 | IA520

IPSO's hardmount washer extractors are secured to the concrete floor, cost significantly less than their softmount counterparts and have a proven record of dependability with superior wash results.

IDEAL FOR

- Hotels
- Restaurants
- Hospitals
- Nursing Homes
- Laundromats
- Industrial laundries
- Cleaning companies
- Spa & Wellness
- Sport clubs
- Campings
- Public sector institutions
- Apartment buildings
- Universities
- Marine

SMART TECHNOLOGY



Optimised energy consumption



Easy control



Management software

COMPLETE WITH

- Rigid mounted, normal spin
- Stainless steel top and front panel, black side panels
- Stainless steel drum and tub
- Aries – easy to use microprocessor
- Patented soap hopper
- Large drain valve (Ø76 mm – IA332-520 : 2 drain valves Ø76 mm)
- Easy access to all vital parts from the front
- Large door opening for easy loading & unloading
- High capacity water inlets (IA280-332-520)



In this picture IA80-280

OPTIONAL ENHANCEMENTS

- Coin operated
- Stainless steel side panels
- USB plug (on the back panel)
- Liquid soap connection
- Liquid soap pumps
- Water recovery kit
- Steam heating version
- Drain pump (IA80)
- 3rd water inlet
- High capacity water inlets (IA180, IA240)

	IA80	IA105	IA135	IA180
INNERDRUM CAPACITY 1:10	7,5 kg	10,5 kg	13,5 kg	18 kg
CAPACITY 1:9	8 kg	12 kg	15 kg	20 kg
VOLUME	75 L	105 L	135 L	180 L
DIAMETER	530 mm	620 mm	620 mm	750 mm
DRUM SPEED				
WASH	50 rpm	46 rpm	46 rpm	42 rpm
EXTRACTION	820 rpm	760 rpm	760 rpm	490 rpm
G-FACTOR	200G	200G	200G	100 G
HEATING				
ELECTRICITY	6 kW	9 kW	12 kW	12 kW
STEAM	1-8 bar	1-8 bar	1-8 bar	1-8 bar
HOT WATER	90° C	90° C	90° C	90° C
SOUND PRESSURE LEVEL	< 65 dB (A)	< 65 dB (A)	< 65 dB (A)	< 65 dB (A)
WATER VALVES CONNECTION	3/4" BSP	3/4" BSP	3/4" BSP	3/4" BSP
WATER PRESSURE	100-800 kPa	100-800 kPa	100-800 kPa	100-800 kPa
REC. WATER PRESSURE	300-500 kPa	300-500 kPa	300-500 kPa	300-500 kPa
WATER INLET	20 L/min	20 L/min	20 L/min	20 L/min
DRAIN VALVE OUTER	Ø 76 mm	Ø 76 mm	Ø 76 mm	Ø 76 mm
FLOW AMOUNT WITH DRAIN	210 L/min	210 L/min	210 L/min	210 L/min
STEAM VALVE CONNECTION	1/2" BSP	1/2" BSP	1/2" BSP	1/2" BSP
STEAM PRESSURE	100-800 kPa	100-800 kPa	100-800 kPa	100-800 kPa
TRANSPORT DATA				
NET WEIGHT	135 kg	170 kg	190 kg	255 kg
MACHINE DIMENSIONS H X W X D	1115 x 660 x 785 mm	1225 x 750 x 785 mm	1225 x 750 x 900 mm	1410 x 890 x 915 mm
PACKING DIMENSIONS H X W X D	1245 x 710 x 835 mm	1355 x 800 x 835 mm	1355 x 800 x 950 mm	1550 x 925 x 970 mm

	IA240	IA280	IA332	IA520
INNERDRUM CAPACITY 1:10	24 kg	28 kg	33 kg	52 kg
CAPACITY 1:9	27 kg	31 kg	37 kg	58 kg
VOLUME	240 L	280 L	332 L	520 L
DIAMETER	750 mm	750 mm	914 mm	914 mm
DRUM SPEED				
WASH	42 rpm	42 rpm	38 rpm	38 rpm
EXTRACTION	490 rpm	490 rpm	540 rpm	440 rpm
G-FACTOR	100 G	100 G	150 G	100 G
HEATING				
ELECTRICITY	18 kW	22 kW	2,2 kW	4,0 kW
STEAM	1-8 bar	1-8 bar	1-8 bar	1-8 bar
HOT WATER	90° C	90° C	90° C	90° C
SOUND PRESSURE LEVEL	< 65 dB (A)	< 65 dB (A)	< 65 dB (A)	< 65 dB (A)
WATER VALVES CONNECTION	3/4" BSP	3/4" BSP	3/4" BSP	3/4" BSP
WATER PRESSURE	100-800 kPa	100-800 kPa	100-800 kPa	100-800 kPa
REC. WATER PRESSURE	300-500 kPa	300-500 kPa	300-500 kPa	300-500 kPa
WATER INLET	20 L/min	20 L/min	66-188 L/min	183-518 L/min
DRAIN VALVE OUTER	Ø 76 mm	Ø 76 mm	Ø 2 x 76 mm	Ø 2 x 76 mm
FLOW AMOUNT WITH DRAIN	210 L/min	210 L/min	2 x 210 L/min	2 x 210 L/min
STEAM VALVE CONNECTION	1/2" BSP	1/2" BSP	3/4" BSP	3/4" BSP
STEAM PRESSURE	100-800 kPa	100-800 kPa	100-800 kPa	100-800 kPa
TRANSPORT DATA				
NET WEIGHT	275 kg	290 kg	410 kg	520 kg
MACHINE DIMENSIONS H X W X D	1410 x 890 x 1060 mm	1410 x 890 x 1135 mm	1500 x 1060 x 1030 mm	1500 x 1060 x 1315 mm
PACKING DIMENSIONS H X W X D	1550 x 925 x 1130 mm	1550 x 925 x 1190 mm	1625 x 1088 x 1060 mm	1625 x 1088 x 1345 mm

CABINET HARDMOUNT WASHERS*

BC20 | BC30 | BC40 | BC60 | BC80 | BC100 [*check regional availability]

IPSO's BC-range of hardmount washer-extractors features 200 G-Force extraction speeds, resulting in reduced dry times and increased throughput.

IDEAL FOR

- Hotels
- Restaurants
- Hospitals
- Nursing Homes
- Laundromats
- Industrial laundries
- Cleaning companies
- Spa & Wellness
- Sport clubs
- Campings
- Public sector institutions
- Apartment buildings
- Universities
- Marine

SMART TECHNOLOGY



Management software



Integrated management platform

COMPLETE WITH

- Hard-mount, medium spin, up to 200 G-factor
- Stainless steel front panel & door, skin plate side panels
- Robotically welded frame
- Stainless steel drum and tub
- Control: ARIES MICRO OPL – easy to use microprocessor
- 4-compartment soap box
- One piece cast bearing housing: long life span
- Heavy duty variable speed motor: smooth start and stop
- Patented system for detecting leaking valves
- Durable door latch and lock mechanism
- Large door opening: easy loading & unloading



In this picture BC20-100

OPTIONAL ENHANCEMENTS

- ARIES Micro VEND – 4 cycles
- Stainless steel side panels
- Liquid soap pumps
- Print board for liquid soap connection

	BC20	BC30	BC40
INNERDRUM			
CAPACITY	9 kg	13 kg	18 kg
VOLUME	79,3 l	119 l	178 l
DIAMETER	Ø533 mm	Ø610 mm	Ø668 mm
DRUM SPEED			
WASH	51 rpm	48 rpm	46 rpm
EXTRACTION	580-819 rpm	542-766 rpm	518-733 rpm
G-FACTOR	100-200G	100-200G	100-200G
DOOR OPENING SIZE	295 mm	363 mm	414 mm
DOOR BOTTOM TO FLOOR	365 mm	356 mm	370 mm
WATER INLET CONNECTION	9 mm	19 mm	19 mm
MOTOR POWER CONSUMPTION	0,75 kW	0,75 kW	1,50 kW
HEATING			
ELECTRIC (240V)	7,8kW	7,8 kW	15,6kW
ELECTRIC (380V)	6,5kW	6,5kW	13,0kW
STEAM	1-8 bar	1-8 bar	1-8 bar
HOT WATER	90°C	90°C	90°C
NOISE LEVEL (dBA)			
WASH	58	58	58
EXTRACTION 100G	56	56	58
EXTRACTION 200G	61	65	65
DRAIN VALVE OUTER	Ø52mm	Ø 52 mm	Ø 76 mm
STEAM INLET CONNECTION	N/A	N/A	½"
STEAM PRESSURE	N/A	N/A	570 kPa
TRANSPORT DATA			
NET WEIGHT	154 kg	200 kg	245 kg
MACHINE DIMENSIONS H X W X D	1120 x 660 x 784 mm	1171 x 737 x 896 mm	1227 x 778 x 1073 mm
PACKING DIMENSIONS H X W X D	1255 x 711 x 859 mm	1303 x 800 x 973 mm	1361 x 826 x 1105 mm

	BC60	BC80	BC100
INNERDRUM			
CAPACITY	27 kg	36 kg	45 kg
VOLUME	255 l	365 l	430 l
DIAMETER	Ø762 mm	Ø914 mm	Ø914 mm
DRUM SPEED			
WASH	43 rpm	39 rpm	39 rpm
EXTRACTION	485-685 rpm	443 – 626 rpm	443-568 rpm
G-FACTOR	100-200G	100- 200G	100-165G}
DOOR OPENING SIZE	414 mm	470 mm	470 mm
DOOR BOTTOM TO FLOOR	379 mm	455 mm	455 mm
WATER INLET CONNECTION	19 mm	19 mm	19 mm
MOTOR POWER CONSUMPTION	2,25 kW	3,75 kW	3,75 kW
HEATING			
ELECTRIC (240V)	15,6kW	27,4 kW	27,4kW
ELECTRIC (380V)	13,0kW	17,2kW	17,2kW
STEAM	1-8 bar	1-8 bar	1-8 bar
HOT WATER	90°C	90°C	90°C
NOISE LEVEL (dBA)			
WASH	58	60	64
EXTRACTION 100G	60	67	69
EXTRACTION 200G	65	73	73
DRAIN VALVE OUTER	Ø 76 mm	Ø 76 mm	Ø 76 mm
STEAM INLET CONNECTION	½"	½"	½"
STEAM PRESSURE	570 kPa	570 kPa	570 kPa
TRANSPORT DATA			
NET WEIGHT	308 kg	567 kg	581 kg
MACHINE DIMENSIONS H X W X D	1295 x 865 x 1135 mm	1481 x 1054 x 1196 mm	1481 x 1054 x 1298 mm
PACKING DIMENSIONS H X W X D	1430 x 953 x 1191 mm	1514 x 1118 x 1384 mm	1514 x 1118 x 1486 mm

BARRIER WASHERS

IH180 | IH240 | IH280 | IMB360 | IMB500 | IMB700

version with Evolis Elite touch control only available in Europe

The range of industrial hygienic barrier-washers are designed for healthcare environments. Their goal is to prevent microbiological contamination during the washing process, while combining performance, strength and energy-saving.

IDEAL FOR

- Hospitals
- Nursing Homes
- Industrial laundries
- Cleaning companies

SMART TECHNOLOGY



Optimised energy consumption
IH180-240-280 only



Programmable control



Management software



Touch screen control for OPL



Integrated management platform

COMPLETE WITH

- Complete stainless steel cabinet
- Stainless steel drum and tub
- Aries Elite: fully programmable and multilingual
- Patented soap hopper (IH180-240-280)
- Large drain valve (Ø76mm) – IH-range
- 2 large drain valves – IMB-range
- Large door opening for easy loading and unloading
- Automatic door positioning
- Liquid soap connection
- RS485 and USB-plug
- Golden lock- patented inner door lock mechanism



In this picture IMB360

OPTIONAL ENHANCEMENTS

- Liquid soap pumps
- Water sample tap
- Touch control Evolis Elite
- Aries Assist
- Second display
- "Pullmann"- drum with 2 compartments
- Automatic weighing system through 4 weighing cells
- Clean room version (IMB360)

	IH180	IH240	IH280
INNERDRUM			
CAPACITY 1:10	18 kg	24 kg	28 kg
CAPACITY 1:9	20 kg	27 kg	31 kg
VOLUME	180 L	240 L	280 L
DIAMETER	750 mm	750 mm	750 mm
DRUM SPEED			
WASH	42 rpm	42 rpm	42 rpm
EXTRACTION	939 rpm	939 rpm	914 rpm
G-FACTOR	370	370	350
HEATING			
ELECTRICITY	12 / 18 kW	18 KW	21,9 KW
STEAM	3-8 bar	3-8 bar	3-8 bar
CONNECTIONS			
ELECTRICAL	STD: (C) 380-415/50/60/3 OPT-NC: (Q)200-240/50/60/3 - (X)200-240/50/60/1 only available for boiler fed and steam heating)- (P)380-415/50/60/3 - (N)440-480/50/60/3		
WATER INLET	STD: 3 x 3/4" - OPT-CN: 2 x 3/4"	STD: 3 x 3/4" - OPT-CN: 2 x 3/4"	STD: 3 x 3/4" - OPT-CN: 2 x 3/4"
STEAM INLET	13 mm (1/2 in)	13 mm (1/2 in)	13 mm (1/2 in)
TRANSPORT DATA			
NET WEIGHT	430 kg	460 kg	490 kg
MACHINE DIMENSIONS H X W X D	1455 x 900 x 1145 mm	1455 x 1020 x 1145 mm	1455 x 1130 x 1145 mm
PACKAGING DIMENSIONS H X W X D	1610 x 1010 x 1235 mm	1610 x 1130 x 1235 mm	1610 x 1240 x 1235 mm

	IMB360	IMB500	IMB700
INNERDRUM			
CAPACITY 1:10	36 kg	50 kg	70 kg
CAPACITY 1:9	40 kg	55,5 kg	78 kg
VOLUME	360 L	500 L	700 L
DIAMETER	775 mm	775 mm	775 mm
DRUM SPEED			
WASH	41 rpm	41 rpm	41 rpm
EXTRACTION	900 rpm	900 rpm	900 rpm
G-FACTOR	350	350	350
HEATING			
ELECTRICITY	36 kW	48 KW	60 KW
STEAM	3-8 bar	3-8 bar	3-8 bar
CONNECTIONS			
ELECTRICAL	3 x 200-240V 50/60Hz 3 x 380-415V 50/60Hz 3 x 440-480V 50/60Hz		
WATER INLET	3 x 1"	3 x 1"	3 x 1"
STEAM INLET	3/4"	3/4"	3/4"
TRANSPORT DATA			
NET WEIGHT	960 kg	1130 kg	1310 kg
MACHINE DIMENSIONS H X W X D	1700 x 1270 x 980 mm	1700 x 1566 x 980 mm	1700 x 2032 x 980 mm
PACKAGING DIMENSIONS H X W X D	2005 x 1530 x 1255 mm	2005 x 1830 x 1195 mm	2005 x 2290 x 1195 mm



In the battle against cross-contamination, the IPSO barrier washer-extractors meet the high European standards for good hygiene in industrial cleaning (RABC method EN14065). Your IPSO equipment maintains the quality of the linen and prevents infections within the laundry process.

BARRIER WASHERS

IB900 | IB1100 | IB1400 | IB1800

The range of industrial hygienic barrier-washers are designed for healthcare environments. Their goal is to prevent microbiological contamination during the washing process, while combining performance, strength and energy-saving.

IDEAL FOR

- Hospitals
- Nursing Homes
- Industrial laundries
- Cleaning companies

SMART TECHNOLOGY



Management software

COMPLETE WITH

- Freestanding, high spin
- Stainless steel cabinet (IB900-1800)
- Stainless steel drum and tub (IB900-1800)
- Oversized frame, bearings and drum
- Large drain valve
- Easy access to all parts
- Frequency controlled motor
- Large door opening for easy loading and unloading
- Graphic display 'Micro' with unlimited possibilities
- Perforated lifting ribs: better washing results, lower water consumption
- Eco-friendly washing programs
- Patented soap hopper dispenser with 5 removable compartments (IB900-1100-1400), 10 compartments (IB1800)



In this picture IB900-1800

OPTIONAL ENHANCEMENTS

- Liquid soap pumps
- Drum with 2 pockets on IB1100, with 3 pockets on IB900
- Automatic weighing system through 4 weighing cells

	IB900	IB1100
INNERDRUM		
CAPACITY 1:10	90 kg	110 kg
CAPACITY 1:9	100 kg	122 kg
VOLUME	900 L	1100 L
DIAMETER	1000 mm	1100 mm
DRUM SPEED		
WASH	36 rpm	35 rpm
EXTRACTION	800 rpm	754 rpm
G-FACTOR	360	350
HEATING		
ELECTRICITY	54 kW	72 kW
STEAM	6-8 bar	6-8 bar
CONNECTIONS		
ELECTRICAL	3 x 380-480 50/60Hz 3 x 200-240V 50/60Hz	3 x 380-480 50/60Hz 3 x 200-240V 50/60Hz
WATER INLET	3 x 1,5" + 1 x 3/4"	3 x 1,5" + 1 x 3/4"
STEAM INLET	1"	19 mm (3/4 in)
TRANSPORT DATA		
NET WEIGHT	2810 kg	2990 kg
MACHINE DIMENSIONS H X W X D	1805 x 2275 x 1615 mm	1855 x 2325 x 1615 mm
PACKAGING DIMENSIONS H X W X D	1985 x 2355 x 1740 mm	1985 x 2400 x 1740 mm

	IB1400	IB1800
INNERDRUM		
CAPACITY 1:10	140 kg	180 kg
CAPACITY 1:9	155,5 kg	200 kg
VOLUME	1400 L	1800 L
DIAMETER	1200 mm	1300 mm
DRUM SPEED		
WASH	33 rpm	36 rpm
EXTRACTION	720 rpm	695 rpm
G-FACTOR	350	350
HEATING		
ELECTRICITY	72/96 kW	-
STEAM	6-8 bar	6-8 bar
CONNECTIONS		
ELECTRICAL	3 x 380-480 50/60Hz 3 x 200-240V 50/60Hz	3 x 380-480 50/60Hz 3 x 200-240V 50/60Hz
WATER INLET	3 x 1,5" + 1 x 3/4"	3 x 1,5" + 1 x 1"
STEAM INLET	1"	1"
TRANSPORT DATA		
NET WEIGHT	3550 kg	4990 kg
MACHINE DIMENSIONS H X W X D	2075 x 2435 x 1805 mm	2165 x 2585 x 1905 mm
PACKAGING DIMENSIONS H X W X D	2250 x 2485 x 1940 mm	2265 x 2665 x 2040 mm



In the battle against cross-contamination, the IPSO barrier washer-extractors meet the high European standards for good hygiene in industrial cleaning (RABC method EN14065). Your IPSO equipment maintains the quality of the linen and prevents infections within the laundry process.

DR TUMBLE DRYERS

DR30 | DR35 | DR50 | DR55S | DR75 | DR120
DR170 | DR200 | STACK UNIT DR335 | DR445

IPSO's industrial tumble dryers feature a concentrated airflow pattern and sealed cylinder rims to ensure maximum air utilization and energy savings.

IDEAL FOR

- Hotels
- Restaurants
- Hospitals
- Nursing Homes
- Laundromats
- Industrial laundries
- Cleaning companies
- Spa & Wellness
- Sport clubs
- Campings
- Public sector institutions
- Apartment buildings
- Universities
- Marine
- Wet-cleaning

SMART TECHNOLOGY



Optimised energy consumption



Integrated management platform

COMPLETE WITH

- Large door opening for easy loading and unloading
- Standard galvanized drum
- Unique drum supporting system
- Self-cleaning large lint filter for easy removal and efficient drying
- Axial airflow (DR30-35-55S)
- Radial airflow (DR50-75-120-170-200)
- Reversing; prevents linen from tangling
- Easy serviceability and diagnostics
- Control applications
 - EVO7S for vend applications (DR30-35-55S-DR335-445)
 - Dual Digital Control for OPL applications



In this picture DR30-35

OPTIONAL ENHANCEMENTS

- Stainless steel front and drum
- CARE (Combustion Auto Response Equipped)
 - Prevents early laundry fire by constantly monitoring the temperature in the drum
 - In case of excessive temperature, linen is sprayed with water
- Control OPL applications:
 - OPTimum Control:
 - 30 programmable cycles
 - 3 cycle types (Time Dry, Auto Dry, Moisture Dry)

	DR30	DR35	DR55S
INNERDRUM			
CAPACITY 1:18	15 kg	19 kg	27 kg
CAPACITY 1:22	12 kg	16 kg	22 kg
DRUM VOLUME	270 L	350 L	490 L
DRUM DIAMETER	673 mm	762 mm	838 mm
POWER			
ELECTRIC HEATING (STD /ECODRY)	21/12 kW	24 / 12 kW	27 / 18 kW
GAS HEATING (STD /ECODRY)	73 000 / 55 000 BTU/h	90 000 / 64 000 BTU/h	112 000 / 105 000 BTU/h
GAS HEATING (STD /ECODRY)	18 408 / 13 869 kcal	22 695 / 16 139 kcal	28 242 / 26 477 kcal
STEAM HEATING @ 6,9 BAR	83 500 - 24,47 BTU -kW	103 400 - 30,30 BTU -kW	-
TRANSPORT DATA			
NET WEIGHT	145 (G/S) - 150 (E)	155 (G/S) - 160 (E)	195 (G) - 200 (E)
MACHINE DIMENSIONS H X W X D	1625 x 710 x 1155 mm	1625 x 800 x 1155 mm	1700 x 875 x 1350 mm
PACKING DIMENSIONS H X W X D	2210 x 880 x 1320 mm	2210 x 950 x 1320 mm	2210 x 1020 x 1520 mm

	DR50	DR75	DR120	DR170
INNERDRUM				
CAPACITY 1:18	29 kg	35 kg	57 kg	78 kg
CAPACITY 1:22	24 kg	29 kg	46 kg	64 kg
DRUM VOLUME	530 L	634 L	1020 L	1410 L
DRUM DIAMETER	940 mm	940 mm	1120 mm	1290 mm
POWER				
ELECTRIC HEATING (STD /ECODRY)	30 kW	36 / 21 kW	60 kW	-
GAS HEATING (STD /ECODRY)	130 00 BTU/h	165 000 / 130 000 BTU/h	270 000 BTU/h	395 000 BTU/h
GAS HEATING (STD /ECODRY)	32 781 kcal	41 607 / 32 781 kcal	68 084 kcal	99 605 kcal
STEAM HEATING @ 6,9 BAR	113 600 - 33,29 BTU-kW	133 900 - 39,24 BTU-kW	187 500 - 54,95 BTU-kW	265 500 - 77,81 BTU-kW
TRANSPORT DATA				
NET WEIGHT	295 (G) - 315 (S) - 310 (E)	310 (G) - 325 (S) - 320 (E)	555 (G) - 605 (S) - 565 (E)	635 (G) - 705 (S)
MACHINE DIMENSIONS H X W X D	1950 x 980 x 1190 mm	1960 x 980 x 1350 mm	2175 x 1170 x 1725 mm	2390 x 1345 x 1775 mm
PACKING DIMENSIONS H X W X D	2240 x 1170 x 1350 mm	2240 x 1170 x 1500 mm	2310 x 1350 x 1890 mm	2550 x 1530 x 1950 mm

	DR200	DR335 STACK UNIT	DR445 STACK UNIT
INNERDRUM			
CAPACITY 1:18	92 kg	2 x 17 kg	2 x 23 kg
CAPACITY 1:22	75 kg	2 x 14 kg	2 x 19 kg
DRUM VOLUME	1660 L	300 L	420 L
DRUM DIAMETER	1290 mm	762 mm	838 mm
POWER			
ELECTRIC HEATING (STD /ECODRY)	-	2 x 21 / 12 kW	-
GAS HEATING (STD /ECODRY)	425 000 BTU/h	73 000 / 55 000 BTU/h	95 000 / 80 000 BTU/h
GAS HEATING (STD /ECODRY)	107 170 kcal	18 408 / 13 869 kcal	23 956 / 20 173 kcal
STEAM HEATING @ 6,9 BAR	265 500 - 77,81 BTU-kW	85 400 - 25,03 BTU-kW	-
TRANSPORT DATA			
NET WEIGHT	705 (G) - 770 (S)	260 (G) - 275 (S) - 300 (E)	320
MACHINE DIMENSIONS H X W X D	2390 x 1345 x 1965 mm	1940 x 800 x 1090 mm	2065 x 875 x 1235 mm
PACKING DIMENSIONS H X W X D	1530 x 2140 x 2550 mm	2210 x 900 x 1270 mm	2210 x 1020 x 1520 mm

DR TUMBLE DRYERS WITH TOUCH CONTROL

[*check regional availability]

DR30 | DR35 | DR50 | DR55S | DR75 | STACK UNIT DR335 | DR445

IPSO's industrial tumble dryers feature a concentrated airflow pattern and sealed cylinder rims to ensure maximum air utilization and energy savings.

IDEAL FOR

- Hotels
- Restaurants
- Hospitals
- Nursing Homes
- Laundromats
- Industrial laundries
- Cleaning companies
- Spa & Wellness
- Sport clubs
- Campings
- Public sector institutions
- Apartment buildings
- Universities
- Marine
- Wet-cleaning

SMART TECHNOLOGY



Optimised energy consumption



Touch screen control for VEND



Touch screen control for OPL



Integrated management platform

COMPLETE WITH

- Large door opening for easy loading and unloading
- Standard galvanized drum
- Unique drum supporting system
- Self-cleaning large lint filter for easy removal and efficient drying
- Axial airflow (DR30-35-55S)
- Radial airflow (DR50-75)
- Reversing: prevents linen from tangling
- Easy serviceability and diagnostics
- Control applications: Evolis touch screen control
 - 7" touch screen control
 - easy to navigate, start a cycle in only 2 touches
 - automatic service & maintenance alerts



In this picture DR30-75- vend version

OPTIONAL ENHANCEMENTS

- Stainless steel front and drum
- CARE (Combustion Auto Response Equipped)
 - Prevents early laundry fire by constantly monitoring the temperature in the drum
 - In case of excessive temperature, linen is sprayed with water

	DR30	DR35	DR55S
INNERDRUM			
CAPACITY 1:18	15 kg	19 kg	27 kg
CAPACITY 1:22	12 kg	16 kg	22 kg
DRUM VOLUME	270 L	350 L	490 L
DRUM DIAMETER	673 mm	762 mm	838 mm
POWER			
ELECTRIC HEATING (STD /ECODRY)	21/12 kW	24 / 12 kW	27 / 18 kW
GAS HEATING (STD /ECODRY)	73 000 / 55 000 BTU/h	90 000 / 64 000 BTU/h	112 000 / 105 000 BTU/h
GAS HEATING (STD /ECODRY)	18 408 / 13 869 kcal	22 695 / 16 139 kcal	28 242 / 26 477 kcal
STEAM HEATING @ 6,9 BAR	83 500 - 24,47 BTU -kW	103 400 - 30,30 BTU -kW	-
TRANSPORT DATA			
NET WEIGHT	145 (G/S) - 150 (E)	155 (G/S) - 160 (E)	195 (G) - 200 (E)
MACHINE DIMENSIONS H X W X D	1625 x 710 x 1155 mm	1625 x 800 x 1155 mm	1700 x 875 x 1350 mm
PACKING DIMENSIONS H X W X D	2210 x 880 x 1320 mm	2210 x 950 x 1320 mm	2210 x 1020 x 1520 mm

	DR50	DR75		
INNERDRUM				
CAPACITY 1:18	29 kg	35 kg		
CAPACITY 1:22	24 kg	29 kg		
DRUM VOLUME	530 L	634 L		
DRUM DIAMETER	940 mm	940 mm		
POWER				
ELECTRIC HEATING (STD /ECODRY)	30 kW	36 / 21 kW		
GAS HEATING (STD /ECODRY)	130 00 BTU/h	165 000 / 130 000BTU/h		
GAS HEATING (STD /ECODRY)	32 781 kcal	41 607 / 32 781 kcal		
STEAM HEATING @ 6,9 BAR	113 600 - 33,29 BTU-kW	133 900 - 39,24 BTU-kW		
TRANSPORT DATA				
NET WEIGHT	295 (G) - 315 (S) - 310 (E)	310 (G) - 325 (S) - 320 (E)		
MACHINE DIMENSIONS H X W X D	1950 x 980 x 1190 mm	1960 x 980 x 1350 mm		
PACKING DIMENSIONS H X W X D	2240 x 1170 x 1350 mm	2240 x 1170 x 1500 mm		

	DR335 STACK UNIT	DR445 STACK UNIT
INNERDRUM		
CAPACITY 1:18	2 x 17 kg	2 x 23 kg
CAPACITY 1:22	2 x 14 kg	2 x 19 kg
DRUM VOLUME	300 L	420 L
DRUM DIAMETER	762 mm	838 mm
POWER		
ELECTRIC HEATING (STD /ECODRY)	2 x 21 / 12 kW	-
GAS HEATING (STD /ECODRY)	73 000 / 55 000 BTU/h	95 000 / 80 000 BTU/h
GAS HEATING (STD /ECODRY)	18 408 / 13 869 kcal	23 956 / 20 173 kcal
STEAM HEATING @ 6,9 BAR	85 400 - 25,03 BTU-kW	-
TRANSPORT DATA		
NET WEIGHT	260 (G) - 275 (S) - 300 (E)	320
MACHINE DIMENSIONS H X W X D	1940 x 800 x 1090 mm	2065 x 875 x 1235 mm
PACKING DIMENSIONS H X W X D	2210 x 900 x 1270 mm	2210 x 1020 x 1520 mm

COMPACT TUMBLERS

IDR195 | IHP195

IDR195 and IHP195 are industrial electric as well heat pump tumblers with 9kg capacity and compact dimensions.

IDEAL FOR

- Hotels
- Restaurants
- Spa & Wellness
- Sport clubs
- Campings
- Apartment buildings
- Universities
- Wet-cleaning

COMPLETE WITH

- Standard galvanized drum
- Anthracite grey skin plate
- Black top panel, anthracite grey top panel (HP version)
- Easy-to-use microprocessor (ECT)
- Reverse drum
- Axial airflow
- 210° door opening for easy loading and unloading
- Intuitive control with simple selection and 3 programs

OPTIONAL ENHANCEMENTS

- Stainless steel front
- Stainless steel drum
- Residual moisture control
 - safe drying of delicate linen
 - humidity detection in %
- Heating power from 6 (kW) up to 12 (kW), to match various installation requirements

	IDR195	IHP195
INNERDRUM		
CAPACITY 1:18	11 kg	11 kg
CAPACITY 1:22	9 kg	9 kg
DRUM VOLUME	195 l	195 l
DRUM DIAMETER	Ø670 mm	Ø670 mm
POWER		
HEATING TYPE	ELECTRIC	HEAT PUMP
HEATING POWER	1,5 kW	6 / 9 / 12 kW
ELECTRIC CONNECTION	3 x 220-230V - 60Hz 3 x 240V - 50Hz 3 x 380-415V + N - 50 Hz 3 x 380-415V + N - 60 Hz 3 x 380-415V - 50 Hz 3 x 380-415V - 60 Hz 3 x 440 V - 60 Hz	3 x 220-240V - 50Hz 3 x 380-415V+N - 50Hz
TRANSPORT DATA		
NET WEIGHT	125 kg	193 kg
MACHINE DIMENSIONS H X W X D	1150 x 710 x 945 mm	1725 x 710 x 925 mm
PACKING DIMENSIONS H X W X D	1253 x 752 x 970 mm	1815 x 752 x 970 mm



IDR195
(optional stainless steel version)

IHP195
(optional stainless steel version)

IDR TUMBLE DRYERS

IPSO's IDR-line of industrial tumblers combines a radial and axial airflow, resulting in a reduced energy consumption while maintaining outstanding drying performance.

IDEAL FOR

- Hotels
- Restaurants
- Hospitals
- Nursing Homes
- Industrial laundries
- Cleaning companies
- Spa & Wellness
- Sport clubs
- Campings
- Public sector institutions
- Apartment buildings
- Universities
- Marine
- Wet-cleaning

COMPLETE WITH

- Standard galvanized drum with large diameter
- Easy-to-use microprocessor (ECT)
- Combination of radial and axial airflow
 - maximal heat transfer
 - low energy consumption
 - short drying time
- Large door opening for easy loading and unloading



OPTIONAL ENHANCEMENTS

- Stainless steel drum
- Reverse drum
- Full control programmer
- Residual moisture control
 - safe drying of delicate linen
 - humidity detection in %
 - ideal in combination with Softwash®
- Softwash®
 - Ideal for dry cleaners, fire departments
 - available on Easy and Full Control
- Stainless steel front
- Available in coin operated version

	IDR190	IDR250	IDR285
INNERDRUM			
CAPACITY 1:18	9 kg	11 kg	13 kg
CAPACITY 1:22	8 kg	12 kg	16 kg
DRUM VOLUME	190 l	250 l	285 l
DRUM DIAMETER	Ø760 mm	Ø760 mm	Ø760 mm
POWER			
ELECTRIC HEATING	6 / 9 / 12 kW	13 / 13,5 kW	13 / 13,5 / 18 kW
GAS HEATING	12,5 kW	16,5 kW	19,5 kW
STEAM HEATING	N/A	16,6 - 23,30 kW	21,5 - 29,9 kW
TRANSPORT DATA			
NET WEIGHT	170 kg	230 kg	250 kg
MACHINE DIMENSIONS H X W X D	1465 x 795 x 815 mm	1680 x 795 x 1070 mm	1680 x 795 x 1240 mm
PACKING DIMENSIONS H X W X D	1570 x 880 x 885 mm	1785 x 855 x 1100 mm	1785 x 855 x 1170 mm

	IDR345	IDR530	IDR680
INNERDRUM			
CAPACITY 1:18	16 kg	24 kg	38 kg
CAPACITY 1:22	19 kg	25 kg	31 kg
DRUM VOLUME	345 l	530 l	680 l
DRUM DIAMETER	Ø760 mm	Ø930 mm	Ø930 mm
POWER			
ELECTRIC HEATING	18 / 24 kW	30 / 36 kW	36 / 48 kW
GAS HEATING	25 kW	33 / 39 kW	46 / 50 kW
STEAM HEATING	24,8 - 35,6 kW	26,8 kW - 36,5 kW	42,1 - 59,9 kW
TRANSPORT DATA			
NET WEIGHT	250 kg	275 kg	305 kg
MACHINE DIMENSIONS H X W X D	1680 x 795 x 1280 mm	1975 x 965 x 1270 mm	1975 x 965 x 1490 mm
PACKING DIMENSIONS H X W X D	1785 x 855 x 1310 mm	2075 x 1040 x 1320 mm	2075 x 1040 x 1540 mm

	IDD285
INNERDRUM	
CAPACITY 1:18	2 x 13 kg
CAPACITY 1:22	2 x 16 kg
DRUM VOLUME	2 x 285 L
DRUM DIAMETER	2 x Ø760 mm
POWER	
ELECTRIC HEATING	2 x 18 kW
GAS HEATING	2 w 16,5 / 2x 19,5 kW
STEAM HEATING	2 x 21,5 - 2 x 29,9 kW
TRANSPORT DATA	
NET WEIGHT	370 kg
MACHINE DIMENSIONS H X W X D	2030 x 795 x 1240 mm
PACKING DIMENSIONS H X W X D	2120 x 880 x 1325 mm

HEAT PUMP TUMBLERS

IHP250 | IHP285 | IHP345

The IHP-range includes 3 models of heat pump tumble-dryers. This range decreases energy consumption by more than 60% because the waste air is reduced. The machine has less heat loss so the laundry area is more comfortable to work in.

IDEAL FOR

- Hotels
- Restaurants
- Spa & Wellness
- Sport clubs
- Campings
- Apartment buildings
- Universities
- Wet-cleaning

COMPLETE WITH

- Standard galvanized drum with large diameter
- Easy-to-use microprocessor
- Combination of radial and axial airflow concept
 - Maximal heat transfer
 - Low energy consumption
- Large door opening for easy loading and unloading
- Reversing drum
- Self-cleaning lint screen

OPTIONAL ENHANCEMENTS

- Coin operated version
- Stainless steel drum
- Full Control programmer
- Residual moisture control:
 - Safe drying of delicate linen
 - Humidity detection in %
 - Ideal in combination with wet cleaning
- Ideal for dry cleaner, fire departments
- Stainless steel front



In this picture IHP250-345

	IHP250	IHP285	IHP345
INNERDRUM			
CAPACITY 1:18	12 kg	16 kg	19 kg
CAPACITY 1:22	11 kg	13 kg	16 kg
DRUM VOLUME	250 L	285 L	345 L
DRUM DIAMETER	760 mm	760 mm	760 mm
DRYING AVERAGE	126 g/min	120 g/min	120 g/min
MOTORS			
FAN	0,30 kW	0,30 kW	0,30 kW
DRIVE	0,25 kW	0,25 kW	0,25 kW
HEAT PUMP			
ELECTRICAL CONNECTION	3 x 380-415V 50Hz+N (standard)	3 x 380-415V 50Hz+N (standard)	3 x 380-415V 50Hz+N (standard)
POWER	2,9 kW	2,9 kW	2,9 kW
PROGRAMMER			
EASY CONTROL	standard	standard	standard
FLEX CONTROL	optional	optional	optional
TRANSPORT DATA			
NET WEIGHT	350 kg	360 kg	375 kg
MACHINE DIMENSIONS H X W X D	1680 x 795 x 1525 mm	1680 x 795 x 1615 mm	1680 x 795 x 1735 mm
PACKING DIMENSIONS H X W X D	1785 x 855 x 1540 mm	1785 x 855 x 1635 mm	1785 x 855 x 1750 mm

DRYING CABINETS

DC4 | DC8 (HP)

DC16 | FDC 6

Drying cabinets are a great complement to traditional tumble dryers in all types of laundry facilities, such as fire stations or multi-housing. Cabinets are perfect for drying garments that should not be tumble-dried.



In these pictures: DC4 (left) and FDC6 (right)

	DC4	DC8 (HP)	DC16	FDC6
LOADING CAPACITY	up to 6 kg	8 kg	16 kg	20 kg
DRYING CAPACITY	25 (g/min)*	62 (g/min)*	81 (g/min)*	6 overalls
HANGING LENGTH	16 m	16 m	32 m	-
HEATING EFFECT	2kW	6 kW	9 kW	12 kW
TOTAL EFFECT	2,038 kW	6,3 kW	9,45 kW	12,45 kW
CONNECTIONS				
STANDARD ELECTRICAL CONNECTION	220-240/50/60Hz/1phase	380-415V/50/60Hz/3phase +N		
FUSE (A)	10	10	16	20
OUTLET EXHAUST	Ø100 mm	Ø125 mm	Ø160 mm	Ø160 mm
OUTLET AIRFLOW	95 m³/h	230 m³/h	300 m³/h	300 m³/h
TRANSPORT DATA				
NET WEIGHT	61 kg	145 kg	235 kg	200 kg
MACHINE DIMENSIONS W X D X H	595 x 610 x 1900 mm	1200 x 640 x 1870 mm	1800 x 800 x 1955 mm	1800 x 800 x 1955 mm

CYLINDER HEATED IRONERS

FCI 320 | FCI 500 | FCIF 500 | FCIR 500 | FCIFF 500 | FCI 800

The FCI range of industrial cylinder heated drying ironers features models with a roller diameter of 320 to 800 mm. These ironers allow a higher output and are therefore the perfect solution for more industrial on-premises applications.

FCI: Cylinder heated ironers
 FCIR: Cylinder heated ironers with rear return
 FCIF: Cylinder heated ironers with integrated length folder
 FCIFF: Cylinder heated ironers with integrated length folder & feeding system

IDEAL FOR

- Hotels
- Restaurants
- Hospitals
- Nursing Homes
- Industrial laundries
- Spa & Wellness
- Sport clubs
- Campings
- Public sector institutions
- Marine

SMART TECHNOLOGY



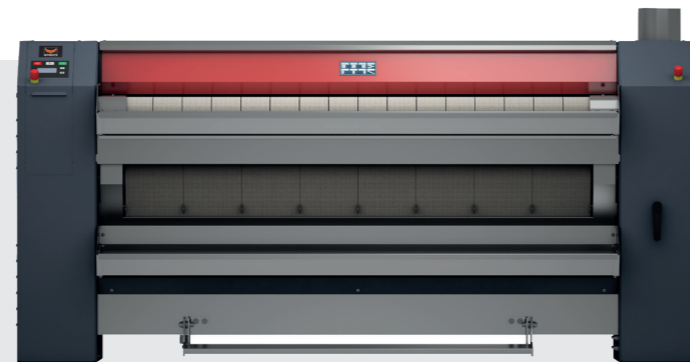
Ironing speed management

COMPLETE WITH

- Large surface contact with linen over an angle of 300°
- High polished steel, thin cylinder
 - Reasonable price
 - Rapid response to temperature
 - Excellent thermal conductivity
- Automatic cooldown
- Easy to operate microprocessor
- Frequency controlled motor
- Indication of ironing speed and temperature
- Space-saving installation against the wall is possible: front return
- Electric or gas heating or steam heating
- Ergonomic design
- Easy to remove lint filters

OPTIONAL ENHANCEMENTS

- Coin operated version (only diameter 33)
- Chrome-plated cylinder for better thermal conduction and ironing quality
- Foot pedal
- Automatic speed control - temperature



In this picture FCI500

	FCI320	FCI500	FCIF500
ROLLER DIAMETER	320 mm	502 mm	502 mm
FINISHING WIDTH	1664 / 2080 mm	1600 / 2000 / 2600 / 3200 mm	2000 / 2600 / 3200 mm
LINEN RETURN			
IRONING CAPACITY	62-72 kg/h	65-120 kg/h	80-145 kg/h
SPEED	1-6 m/min	1,5-8 m/min	1,5-8 m/min
HEATING			
ELECTRIC	24,3 - -	32,4-64,8 kW	37,2-64,8 kW
GAS	- - 30 kW	30-66 kW	36-66 kW
STEAM	-	36-88 kg/h	49-88 kg/h
ELECTRIC CONNECTION	3 x 480-415 V + N 50/60 Hz 3 x 208-240 V 50/60 Hz 3 x 380-415/440V 50/60 Hz	3 x 480-415 V + N 50/60 Hz 3 x 208-240 V 50/60 Hz 3 x 380-415/440V 50/60 Hz	3 x 208-240V 50/60Hz 3 x 380-415 + N 50-60Hz 3AC/380-415-N 50/60Hz 3AC/440V 60Hz
TRANSPORT DATA			
NET WEIGHT	435 / 465	890 (E) - 920 (G) - 900 (S) 1020 (E) - 1150 (G) - 1070 (S) 1260 (E) - 1290 (G) - 1280 (S) 1470 (E) - 1590 (G) - 1540 (S)	1150 (E) - 1290 (G) - 1200 (S) 1430 (E) - 1440 (G) - 1430 (S) 1590 (E) - 1680 (G) - 1620 (S)
MACHINE DIMENSIONS H X W X D	1110 x 2084 x 765 mm 1110 x 2500 x 765 mm 1110 x 2084 x 765 mm 1110 x 2500 x 765 mm	1232 x 2350 x 1052 mm 1232 x 2750 x 1052 mm 1232 x 3350 x 1087 mm 1232 x 3950 x 1087 mm	1568 x 2750 x 1620 mm 1568 x 3350 x 1620 mm 1568 x 3950 x 1620 mm
PACKING DIMENSIONS H X W X D	1260 x 2190 x 765 mm 1260 x 2610 x 800 mm 1260 x 2190 x 800 mm 1260 x 2610 x 800 mm	1550 x 2485 x 1095 mm 1550 x 2885 x 1095 mm 1550 x 3485 x 1095 mm 1550 x 4085 x 1095 mm	1890 x 2885 x 1290 mm 1890 x 3485 x 1290 mm 1890 x 4085 x 1290 mm

	FCIR500	FCIFF500	FCI800
ROLLER DIAMETER	502 mm	-	807 mm
FINISHING WIDTH	2000 / 2600 / 3200 mm	2000 / 2600 / 3200 mm	3186 mm
LINEN RETURN			
IRONING CAPACITY	80-145 kg/h	80-145 kg/h	195 kg/h
SPEED	1,5-8 m/min	-	3-15 m/min
HEATING			
ELECTRIC	37,2-64,8 kW	37,2-64,8 kW	75 kW
GAS	36-66 kW	36-66 kW	110 kW
STEAM	49-88 kg/h	49-88 kg/h	190 kg/h
ELECTRIC CONNECTION	3 x 208-240V 50/60Hz 3 x 380-415 + N 50-60Hz 3AC/380-415-N 50/60Hz 3AC/440V 60Hz	208-240V 50-60Hz/3 380-415V+N 50-60Hz/3 3AC/380-415-N 50/60Hz 3AC/440V 60Hz	3AC/380-415 + N 50/60Hz 3A/380-415-N 50/60Hz 3AC/440V 60Hz 3AC/208-240V 50/60Hz
TRANSPORT DATA			
NET WEIGHT	1090 (E) - 1230 (G) - 1140 (S) 1350 (E) - 1380 (G) - 1350 (S) 1490 (E) - 1580 (G) - 1520 (S)	1690 (E) - 1700 (G) - 1720 (S) 2060 (E) - 2180 (G) - 2100 (S) 2360 (E) - 2400 (G) - 2380 (S)	2610 (E) - 2480 (G) - 2900 (S)
MACHINE DIMENSIONS H X W X D	1568 x 2750 x 1528 mm 1568 x 3350 x 1528 mm 1568 x 3950 1528 mm		1985 x 4260 x 1915 mm
PACKING DIMENSIONS H X W X D	1890 x 2885 x 1290 mm 1890 x 3485 x 1290 mm 1890 x 4085 x 1290 mm	1990 x 2990 x 1370 mm 1990 x 3590 x 1370 mm 1990 x 4190 x 1370 mm	2075 x 4330 x 1940 mm

ROLLER IRONERS

125 | 130

The I-range of industrial ironers is very suitable for smaller on-premises applications thanks to its reduced dimensions and user-friendly operation. This range of ironers offers an excellent ironing quality for all fabric types, including the most complex to treat such as linen or embroidered table cloths.

IDEAL FOR

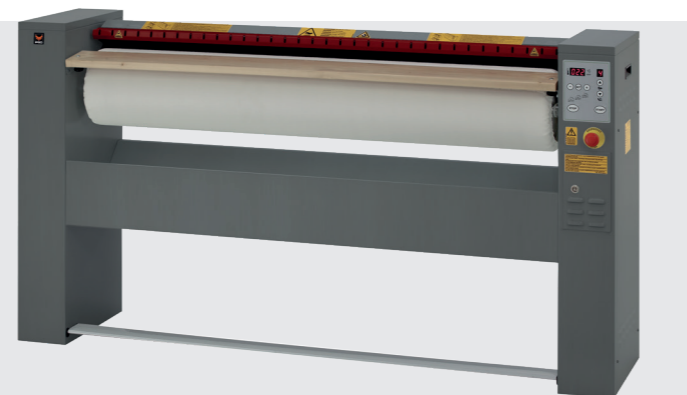
- Hotels
- Restaurants
- Hospitals
- Nursing Homes
- Spa & Wellness
- Sport clubs
- Campings
- Public sector institutions
- Marine

COMPLETE WITH

- Homogeneous ironing pressure to ensure top ironing quality
- PID controlled temperature regulation offering better temperature distribution and reduced energy consumption
- Long-life heating elements
- All vital components are easily accessible
- Start/stop pedal
- Backside of the basin is insulated with 25mm ceramic wool – no energy waste

OPTIONAL ENHANCEMENTS

- Frequency inverter enabling variable ironing speed
- Fan exhaust removing humid air from the ironer (I25-140, I30-160, I30-200)



In this picture I25

	I25-100	I25-120	I25-140
ROLLER DIAMETER	250 mm	250 mm	250 mm
USEFUL ROLLER LENGTH	1000 mm	1200 mm	1400 mm
SPEED	3,9 (2-4 optional variable speed) m/min	3,9 (2-4 optional variable speed) m/min	3,9 (2-4 optional variable speed) m/min
CAPACITY	30 kg/h	35 kg/h	40 kg/h
HEATING			
ELECTRICITY	5 kW	6 kW	7 kW
MOTOR			
POWER	5,2 kW	6,2 kW	7,2 kW
TRANSPORT DATA			
GROSS WEIGHT	119 kg	130 kg	154 kg
NET WEIGHT	110 kg	118 kg	135 kg
MACHINE DIMENSIONS H X W X D	1005 x 1400 x 420 mm	1005 x 1600 x 420 mm	1005 x 1800 x 420 mm
PACKING DIMENSIONS H X W X D	1150 x 1480 x 500 mm	1150 x 1680 x 500 mm	1150 x 1880 x 500 mm

	I30-160	I30-200AV
ROLLER DIAMETER	290 mm	290 mm
USEFUL ROLLER LENGTH	1600 mm	2000 mm
SPEED	3,9 (2-4 optional variable speed) m/min	2-4 m/min
CAPACITY	32-50 kg/h	52-79 kg/h
HEATING		
ELECTRICITY	13,2 kW	16,8 kW
MOTOR		
POWER	13,7 kW	17,5 kW
TRANSPORT DATA		
GROSS WEIGHT	300 kg	350 kg
NET WEIGHT	262 kg	294 kg
MACHINE DIMENSIONS H X W X D	1100 x 2200 x 500 mm	1100 x 2600 x 500 mm
PACKING DIMENSIONS H X W X D	1260 x 2280 x 590 mm	1260 x 2690 x 590 mm

CHEST HEATED IRONERS 1 ROLL

ACL 370 | ACL 500 | ACL 600 | ACL 800 | ACL 80K

The chest heated ironers meet the highest industrial ironing needs. One single person can operate an ironers which allows to save on labour cost. For the complementary feeder and folders, see page 30-31.

IDEAL FOR

- Hospitals
- Nursing Homes
- Industrial laundries
- Public sector institutions

COMPLETE WITH

CHEST

- One piece super flexible laser welding chest
- Self-adjusted chest applies pressure always equally over entire width and length of the roll that makes linen being ironed equal quality
- Chest heated by circulated thermal oil moving in inside the chests. It makes the temperature even along full chest width. No trouble of overheated spots.
- Self-contained thermal oil heating and circulation system offers accurate temperature control, easy installation and start up.

ROLL

- Perforated steel roll with under springing and 800 gr/m² padding
- Suction through the roll to ventilate moisture
- Fully enclosed planetary gearbox mounted directly onto the roll
- Variable speed by frequency inverter drive Control ACL80K
- Standard 7.5" touch screen with 50 programs
- Speed regulation and modulating burner included. Control ACL370 – 500 – 600 – 800
- Simple readout control to set temperature and speed manually

OPTIONAL ENHANCEMENTS

- Foot pedal for easy stop and start
- Perforated vacuum feeding bands for easy feeding linen (ACL80K)
- Higher ironing speeds (ACL370-800)
- Longer feeding table (ACL370-800)



In this picture ACL80K

	ACL370					ACL500						ACL600											
	17	20	22	25	30	17	20	22	25	30	33	17	20	22	25	30	33						
ROLL DIAMETER (MM)	370					500						600											
WORKING WIDTH (MM)	1750	2000	2200	2500	3000	1750	2000	2200	2500	3000	3300	1750	2000	2200	2500	3000	3300						
IRONING SPEED (MM)	1-6,5					1,5-5,5 (1,5-12 optional)						1,5-6,5											
IRONING CAPACITY - ELECTRIC AND GAS HEATING (KG/HR)	48	54	60	67	81	65	75	82	95	115	125	100	109	126	140	160	175						
IRONING CAPACITY - STEAM HEATING (KG/HR)	-					58	67	74	85	103	112	90	98	113	126	144	157						
GAS HEATING																							
GAS CONNECTION (INCH)	1/2									3/4													
ELECTRIC HEATING																							
HEATING ELEMENT (KW)	30			35		40		30		30		35		40		45			50		60		75
STEAM HEATING																							
STEAM PRESSURE (BAR)	-					6-12																	
STEAM CONNECTION (INCH)	-					5/4																	
STEAM CONSUMPTION @10 BAR (KG)	-					50	57	63	72	88	95	77	83	96	107	123	134						
TRANSPORT DATA																							
GROSS WEIGHT (KG)	730	812	892	1013	1233	1030	1230	1300	1380	1505	1630	1830	2030	2230	2430	2630	2930						
NET WEIGHT (KG)	700	782	862	983	1203	1000	1200	1270	1350	1475	1600	1800	2000	2200	2400	2600	2900						
MACHINE DIMENSIONS H X W X D (MM)	1200 2474 1520	1200 2724 1520	1200 2924 1520	1200 3224 1520	1200 3724 1520	1200 2600 1715	1200 2850 1715	1200 3050 1715	1200 3350 1715	1200 3850 1715	1200 4150 1715	1395 2725 1900	1395 2975 1900	1395 3175 1900	1395 3475 1900	1395 3975 1900	1395 4275 1900						
PACKING DIMENSIONS H X W X D (MM)	1300 2574 1050	1300 2824 1050	1300 3024 1050	1300 3224 1050	1300 3824 1050	1300 2700 1195	1300 2950 1195	1300 3150 1195	1300 3450 1195	1300 3950 1195	1300 4250 1195	1495 2825 1595	1495 3075 1595	1495 3275 1595	1495 3575 1595	1495 4075 1595	1495 4375 1595						

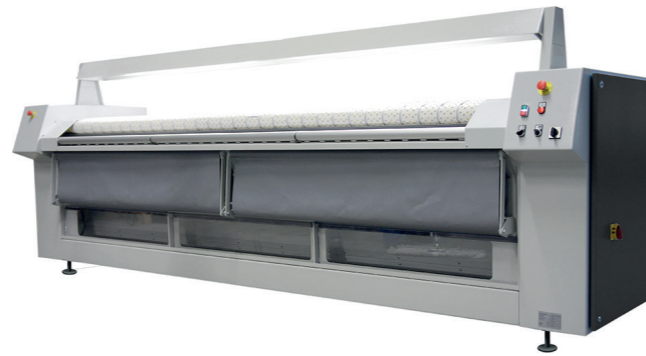
	ACL800						ACL80K									
	17	20	22	25	30	33	25	30	33	35						
ROLL DIAMETER (MM)	800															
WORKING WIDTH (MM)	1750	2000	2200	2500	3000	3300	2500	3000	3300	3500						
IRONING SPEED (MM)	3-12						9-36									
IRONING CAPACITY - ELECTRIC AND GAS HEATING (KG/HR)	152	164	186	200	230	250	308	370	405	430						
IRONING CAPACITY - STEAM HEATING (KG/HR)	136	147	167	180	207	225	-									
GAS HEATING																
GAS CONNECTION (INCH)	3/4						5/4									
ELECTRIC HEATING																
HEATING ELEMENT (KW)	60			75			90		100		120		150		165	
STEAM HEATING																
STEAM PRESSURE (BAR)	6-12						-									
STEAM CONNECTION (INCH)	5/4						-									
STEAM CONSUMPTION @10 BAR (KG)	98	113	123	140	169	186	-									
TRANSPORT DATA																
GROSS WEIGHT (KG)	2030	2230	2630	2830	3130	3430	2800	3100	3250	3450						
NET WEIGHT (KG)	2000	2200	2600	2800	3100	3400	n/a									
MACHINE DIMENSIONS H X W X D (MM)	1415 2910 2035	1415 3160 2035	1415 3360 2035	1415 3660 2035	1415 4160 2035	1415 4460 2035	1655 3735 1820	1655 4235 1820	1655 4535 1820	1655 4735 1820						
PACKING DIMENSIONS H X W X D (MM)	1515 3010 1755	1515 3260 1755	1515 3460 1755	1515 3760 1755	1515 4260 1755	1515 4560 1755	1800 3800 2300	1800 4300 2300	1800 4600 2300	1800 4800 2300						

FEEDERS

VACUUM FEEDER AVFV AUTOMATIC FEEDER AAFV

FEEDER AVFV 30-35

- For manual feeding of sheets, duvets, table linen and small pieces in one or multiple lanes
- Suction under the feeding belts to ensure the leading edge is held in position
- Central dust collecting system
- Adjustable speed regulation from 8 to 40m/min
- Number of lander and feeding positions standard 1 to 6



FEEDER AAFV 30-35

- Single lane automatic one station feeder
- For feeding linen of manual feeding in multiple lanes
- Two operators can feed into the one clipping station and achieve a production of +/- 500 pcs/hr.
- Heavy duty steel construction
- Movable collecting bags to store small linen
- Central dust collecting system



	Vacuum feeder AVFV			Automatic feeder AAFV		
	30	33	35	30	33	35
WORKING WIDTH, MAX CONNECTIONS	3000 mm	3300 mm	3500 mm	3000 mm	3300 mm	3500 mm
ELECTRIC	4,34 - 11A kW			3,5 - 8,6A kW		
MAIN POWER	400-50/60/3					
TRANSPORT DATA						
GROSS WEIGHT	1850 kg	1850 kg	2150 kg	1050 kg	1050 kg	1150 kg
NET WEIGHT	1800 kg	1800 kg	2100 kg	1000 kg	1000 kg	1100 kg
MACHINE DIMENSIONS H X W X D	4030 x 1650 x 1600mm		4230 x 1650 x 1600 mm	4030 x 1650 x 1480 mm		4230 x 1650 x 1480 mm
PACKING DIMENSIONS H X W X D	4030 x 1650 x 1600mm		4230 x 1650 x 1600 mm	4030 x 1650 x 1480 mm		4230 x 1650 x 1480 mm

FOLDERS

ASFV 30-35 | ATFV C3 | ATFV MF

FOLDER ASFV 30-35

- For bed sheets, duvets, tablecloths and large sheets
- High speed folder with single lane sheets making 2 lateral folds combined with 3 cross folds and stacking by a drop stacker
- Standard max. length on multi-lane is 1200 mm
- Stacker can be positioned on right or left, to fit your laundry flow



FOLDER ATFV C3

- Automatic folder for different types of towels and dry work
- Machine is available in several executions
- Cross fold is combined with stacking and return to operator
- Working width: 1100m, maximum length: 2 400m
- Four wheels underneath to easily move the folder



FOLDER ATFV MF

- Advanced folding, sorting and stacking machine for a large variety of towels or dry articles.
- Machine is available in several executions
- Central conveyor left or right coming back to the operator or backwards to fit your laundry flow needs
- Fixed speed 52m/min

	ATFV-MF	ATFV-C3
WORKING WIDTH, MAX CONNECTIONS	1000 mm	1200 mm
WORKING LENGTH, MAX CONNECTIONS	1800 mm	2400 mm
ELECTRIC	3,5 - 8,5A	2,5 - 6A
MAIN POWER	400/50/60/3	
TRANSPORT DATA		
GROSS WEIGHT	1400 kg	850 kg
NET WEIGHT	1320 kg	800 kg
MACHINE DIMENSIONS H X W X D	1360 X 2050 X 4580 mm	1700 x 1600 x 3000 mm
PACKING DIMENSIONS H X W X D	1900 X 1550 X 3950 mm	1750 x 1600 x 3000 mm

	ASFV 30	ASFV 33	ASFV 35
WORKING WIDTH, MAX CONNECTIONS	3000 mm	3300 mm	3500 mm
ELECTRIC	4,5 - 11A		
MAIN POWER	400/50/60/3		
TRANSPORT DATA			
GROSS WEIGHT	1750 kg	2050 kg	
NET WEIGHT	1700 kg	2000 kg	
MACHINE DIMENSIONS H X W X D	1800 x 4700 x 4100 mm	1800 x 4900 x 4100 mm	
PACKING DIMENSIONS H X W X D	2200 x 4700 x 1900 mm	2200 x 4900 x 1900 mm	

SEMI-COMMERCIAL UNITS*

[*check regional availability-
not available in EMEA]

CW10 | CD10 | CS10

The CW10-washers are highly efficient, reducing operating costs through low water usage. A 1,200 RPM spin speed increases overall laundry efficiency by removing more moisture from loads.

The CD10-dryers are designed with a large door opening, the largest in the industry on this type of equipment, providing easy loading and unloading.

The range of CS10-stack washer/dryers has been designed as vertical combinations that provide all of the power of IPSO washers and dryers while occupying only half of the floor space of a conventional washer and dryer setup.

IDEAL FOR

- Hotels
- Restaurants
- Hospitals
- Nursing Homes
- Laundromats
- Spa & Wellness
- Sport clubs
- Campings
- Public sector institutions
- Apartment buildings
- Universities
- Marine
- Wet-cleaning

CW10 WASHER-EXTRACTOR

- Stainless steel outer and inner drum
- Freestanding: can be installed at any floor and any level
- Top, front and side panels standard available in white
- Door opens 180° for easy loading and unloading
- Standard drain pump
- Redesigned soap box with four compartments
- 440 G-force extraction
 - Removes more moisture
 - Minimizes drying times and utility costs
- 6 wash programs including possibility of programming cycle modifier options
 - Added prewash
 - Extra wash time
 - Extra rinse

CD10 DRYER

- Galvanized steel cylinder
- Top, front and side panels standard available in white
- Door opens 180° for easy loading and unloading
- Oversized lint filter located in front for easy cleaning
- Noiseless exhaust blower assures short drying time and low operating cost
- 5 drying programs



	CW10		
MODEL NUMBER	BF33LBS403UN06 - BF33LBS403UW06 - BF33LBS403UN06 - BF33LBS403UW06	BF33XASP403UN06 - BF33XASP403UW06 - BF33XASC403UN06	BF33GSP403UN06 - BF33GSP403UW06 - BF33GSP403UN06 - BF33GSP403UW06 - BF33GSC403UN06 - BF33GSC403UW06 - BF33GSC403UN06 - BF33GSC403UW06
CONTROL	EVO7S		
CONTROL LOCATION	45° front control	10° front control	45° front control
ACTUATION	Prep for central pay	Prep for coin	OPL
HEATING			
ELECTRICITY	4,8 kW		
DRUM			
CAPACITY	9,5 kg		
VOLUME	96,8 L		
DRUM SPEED			
G-FORCE	440		
EXTRACTION	1200 rpm		
MOTOR			
MOTOR POWER	0,67 kW		
CONNECTIONS			
WATER INLET	0,75 in		
WATER PRESSURE	20-120 bar		
ELECTRICAL CONNECTION	400/50/3N (conversion to 230/50/3 possible)		
TRANSPORT DATA			
NET WEIGHT	118 kg		
MACHINE DIMENSIONS HXWXD	1027 X 683 X 704 mm		
PACKING DIMENSIONS HXWXD	1130 x 762 x 864 mm		

	CD10				
MODEL NUMBER	BD3NGBS403UN01 - BD3NGBS403UW01	BDGNGBS303EW01	BD3NXACS403UW01 - BDGNXACS303EW01	BD3NLBS403UN01 - BD3NLBS403UW01	BDCNLBS303EW01
CONTROL	EVO7S				
CONTROL LOCATION	45° front control	45° front control	10° front control	45° front control	45° front control
ACTUATION	OPL - Electric	OPL - Gas	Prep for coin	Prep for central pay	Prep for central pay
HEATING					
ELECTRICITY	4,5 kW	n/a	4,5 kW	4,5 kW	n/a
GAS	n/a	20 000 BTU	n/a	n/a	n/a
DRUM					
CAPACITY	8,2 kg				
VOLUME	198 L				
MOTOR					
POWER	0,25 kW				
CONNECTIONS					
GAS INLET	n/a	9,5 mm	n/a		n/a
EXHAUST OUTLET DIAMETER	102 mm				
EXHAUST AIRFLOW	105 L/sec				
ELECTRICAL CONNECTION	400/50/3N (conversion to 230/50/3 possible)			220-240/50/1	
TRANSPORT DATA					
NET WEIGHT	68 kg				
MACHINE DIMENSIONS HXWXD	1027 x 683 x 711 mm				
PACKING DIMENSIONS H X W X D	1156 x 737 x 832 mm				

	CS10		
MODEL NUMBER	BT33LASP403UN06 - BT33LASP403UW06 - BT33LASC403UW06	BT33XASP403UN06 - BT33XASP403UW06 - BT33XASC403UW06	BT33GASP403UN06 - BT33GAJ403UN06 - BT33-GASP403UW06 - BT33GAJ403UW06 - BT33GASC403UW06 - BT33GAJ403UW06
CONTROL	EVO7S		
CONTROL LOCATION	10° front control		
ACTUATION	Prep for central pay	Prep for coin	OPL
HEATING			
ELECTRICITY	washer: 3 ph / dryer 3ph		
DRUM			
CAPACITY	Washer: 9,5 kg / Dryer 8,2 kg		
VOLUME	Washer: 96,8 L / Dryer : 198 L		
MOTOR			
POWER	Washer : 0,67- Dryer 0,25		
CONNECTIONS			
EXHAUST OUTLET DIAMETER	102 mm		
EXHAUST AIRFLOW	105 L/sec		
WATER INLET	0,75 "		
WATER PRESSURE	20-120		
ELECTRICAL CONNECTION	400/50/3N (conversion to 230/50/3 possible)		
TRANSPORT DATA			
NET WEIGHT	175 kg		
MACHINE DIMENSIONS HXWXD	1986 x 683 x 704 mm		
PACKING DIMENSIONS H X W X D	2032 x 762 x 864 mm		

SEMI-COMMERCIAL WASHER*

[*check regional availability-
not available in EMEA]

SC70 - SC90

The SC semi-commercial washers are designed for small spaces.

IDEAL FOR

- Appartments
- Spa & Wellness
- Sport clubs
- Marine

COMPLETE WITH

- Titanium grey cabinet
- Stainless steel drum and tub
- Easy to use timer with color display
- Mop and medical programs
- 3 soap compartments
- Matching dryer available – space saving when placed on top



OPTIONAL ENHANCEMENTS

- WiFi modules to connect to WiFi & Connect Life
- Kit to connect to central pay system
- Connectivity to external systems
- Marine fixing brackets to avoid tilting of the machine

	SC70	SC90
CAPACITY 1:10	6 kg	8 kg
VOLUME	60 L	80 L
DIAMETER	480 mm	480 mm
HEATING	Electric	Electric
EXTRACTION	1400 rpm	1400 rpm
G-FACTOR	530	530
ELECTRICAL CONNECTION	With drainpump: 208-240V/60/1 380-415V/50/3Ph+N* 440V/60/3Ph-N	400V/50Hz/3ph
ELECTRICAL HEATING	3,2 Kw	4,6 Kw
NET WEIGHT	pump : 76,5 kg valve : 77,0 kg	Pump : 92,0 kg Valve : 92,5 kg
MACHINE DIMENSIONS H X W X D	850 X 595 X 590 mm	850 X 595 X 706 mm
PACKING DIMENSIONS H X W X D	920 X 640 X 661 mm	920 X 640 X 776 mm

SEMI-COMMERCIAL DRYERS*

*[*check regional availability-
not available in EMEA]*

DAMV7 | DAMC7 | DAM7HP | DAMV9

The semi-commercial dryers are designed for small spaces, with a limited capacity. The executions vary from vented to condens and heat pump dryer.

IDEAL FOR

- Apartments
- Spa & Wellness
- Sport clubs
- Marine

COMPLETE WITH

- Titanium grey cabinet
- Stainless steel drum
- Large door opening (Ø45cm)



OPTIONAL ENHANCEMENTS

- WiFi modules to connect to WiFi & Connect Life
- Kit to connect to central pay system
- Connectivity to external systems
- Marine fixing brackets to avoid tilting of the machine

	DAM7 Vented dryer	DAMC7 Condens dryer	DAM9 HP Heat pump dryer	DAMV9 Vented dryer
CAPACITY 1:18	7 kg	7 kg	7 kg	8 kg
VOLUME	117 L	117 L	117 L	145 L
DIAMETER	Ø 571 x 476 mm	Ø 571 x 476 mm	Ø 571 x 476 mm	Ø 571 x 476 mm
HEATING	electric	electric	electric	electric
ELECTRICAL CONNECTION	208-240V/60/1 380-415V/50/3Ph+N 440V/60/3Ph-N	380-415/50/3Ph+N	208-240V/50/1Ph	400V/50Hz/3ph 230V/50Hz/1ph
ELECTRICAL HEATING	3Kw	3 Kw	0,9 kW	4,4 kW
NET WEIGHT	40 kg	45 kg	57 kg	43,6 kg
MACHINE DIMENSIONS H X W X D	850 X 595 X 654 mm	850 X 595 X 654 mm	850 X 595 X 654 mm	850 X 595 X 769 mm
PACKING DIMENSIONS H X W X D	920 x 640 x 723 mm	920 x 640 x 723 mm	920 x 640 x 723 mm	920 x 640 x 838 mm

Ipsos by Alliance Laundry Systems LLC
PO BOX 990, Shepard Street
Ripon, WI54971, USA
ipso@alliancels.com

IPSO is a division of Alliance Laundry Systems, based in Ripon, Wis., USA. Alliance is the world's leading manufacturer of commercial laundry equipment.
Learn more at alliancelaundry.com